



Labour Force Survey Statistics July 2021

## CALGARY CMA

**Table 14-10-0380-02 (282-0135) Labour force survey estimates (LFS), by census metropolitan area based on 2011 census boundaries, 3-month moving average, seasonally adjusted, monthly (persons unless otherwise noted)**

	July 2020	June 2021	July 2021	# Change June 2021 - July 2021	% Change June 2021 - July 2021	# Change July 2020 - July 2021	% Change July 2020 - July 2021
Population (x 1,000)	1,248.4	1,263.8	1,264.9	1.1	0.1%	16.5	1.3%
Labour force (x 1,000)	882.4	886.1	889.2	3.1	0.3%	6.8	0.8%
Employment (x 1,000)	745.3	804.4	802.5	-1.9	-0.2%	57.2	7.7%
Unemployment (x 1,000)	137.1	81.8	86.7	4.9	6.0%	-50.4	-36.8%
Unemployment rate (rate)	15.5%	9.2%	9.8%	0.6%		-5.7%	
Participation rate (rate)	70.7%	70.1%	70.3%	0.2%		-0.4%	
Employment rate (rate)	59.7%	63.6%	63.4%	-0.2%		3.7%	

## CALGARY CMA

**Table 14-10-0378-01 (282-0128) Labour force survey estimates (LFS), by census metropolitan area based on 2011 census boundaries, 3-month moving average, unadjusted for seasonality, monthly (persons unless otherwise noted)**

	July 2020	June 2021	July 2021	# Change June 2021 - July 2021	% Change June 2021 - July 2021	# Change July 2020 - July 2021	% Change July 2020 - July 2021
Population (x 1,000)	1,248.4	1,263.8	1,264.9	1.1	0.1%	16.5	1.3%
Labour force (x 1,000)	890.0	886.5	895.8	9.3	1.0%	5.8	0.7%
Employment (x 1,000)	753.4	807.2	809.7	2.5	0.3%	56.3	7.5%
Full-time employment (x 1,000)	635.6	663.5	661.4	-2.1	-0.3%	25.8	4.1%
Part-time employment (x 1,000)	117.8	143.7	148.3	4.6	3.2%	30.5	25.9%
Unemployment (x 1,000)	136.5	79.3	86.1	6.8	8.6%	-50.4	-36.9%
Not in labour force (x 1,000)	358.4	377.3	369.0	-8.3	-2.2%	10.6	3.0%
Unemployment rate (rate)	15.3%	8.9%	9.6%	0.7%		-5.7%	
Participation rate (rate)	71.3%	70.1%	70.8%	0.7%		-0.5%	
Employment rate (rate)	60.3%	63.9%	64.0%	0.1%		3.7%	

## CALGARY CMA

**Table: 14-10-0397-01 (282-0130) Labour force survey estimates (LFS), employment by census metropolitan area based on 2011 census boundaries and North American Industry Classification System (NAICS), 3-month moving average, unadjusted for seasonality, monthly (persons x 1,000)**

	July 2020	June 2021	July 2021	# Change June 2021 - July 2021	% Change June 2021 - July 2021	# Change July 2020 - July 2021	% Change July 2020 - July 2021
Total Employed - All Industries	753.4	807.2	809.7	2.5	0.3%	56.3	7.5%
Goods-Producing Sector	170.2	180.1	180.7	0.6	0.3%	10.5	6.2%
Agriculture	2.2	2.0	1.9	-0.1	-5.0%	-0.3	-13.6%
Forestry, Fishing, Mining, Quarrying, Oil and Gas	46.1	50.4	49.3	-1.1	-2.2%	3.2	6.9%
Utilities	10.0	9.3	7.7	-1.6	-17.2%	-2.3	-23.0%
Construction	69.0	73.6	76.4	2.8	3.8%	7.4	10.7%
Manufacturing	42.9	44.8	45.5	0.7	1.6%	2.6	6.1%
Services-Producing Sector	583.3	627.1	629.0	1.9	0.3%	45.7	7.8%
Wholesale & Retail Trade	94.2	114.2	112.6	-1.6	-1.4%	18.4	19.5%
Transportation and Warehousing	46.3	44.9	47.3	2.4	5.3%	1.0	2.2%
Finance, Insurance, Real Estate and Leasing	44.3	49.0	49.7	0.7	1.4%	5.4	12.2%
Professional, Scientific and Technical Services	84.3	94.7	95.9	1.2	1.3%	11.6	13.8%
Business, Building and Other Support Services	33.2	24.2	25.1	0.9	3.7%	-8.1	-24.4%
Educational Services	46.2	71.7	67.8	-3.9	-5.4%	21.6	46.8%
Health Care and Social Assistance	102.3	112.1	108.9	-3.2	-2.9%	6.6	6.5%
Information, Culture and Recreation	30.5	24.0	26.2	2.2	9.2%	-4.3	-14.1%
Accommodation and Food Services	37.3	36.7	39.6	2.9	7.9%	2.3	6.2%
Other Services	35.9	35.7	34.0	-1.7	-4.8%	-1.9	-5.3%
Public Administration	28.7	19.8	21.8	2.0	10.1%	-6.9	-24.0%

## Province of Alberta

**Table: 14-10-0287-01 (282-0087) Labour force survey estimates (LFS), by sex and age group, seasonally adjusted, monthly (persons unless otherwise noted)**

	July 2020	June 2021	July 2021	# Change June 2021 - July 2021	% Change June 2021 - July 2021	# Change July 2020 - July 2021	% Change July 2020 - July 2021
Population (x 1,000)	3,509.1	3,537.7	3,540.8	3.1	0.1%	31.7	0.9%
Labour force (x 1,000)	2,426.8	2,450.3	2,442.2	-8.1	-0.33%	15.4	0.6%
Employment (x 1,000)	2,114.3	2,221.5	2,233.8	12.3	0.6%	119.5	5.7%
Employment full-time (x 1,000)	1,718.4	1,781.1	1,801.2	20.1	1.1%	82.8	4.8%
Employment part-time (x 1,000)	396.0	440.4	432.6	-7.8	-1.8%	36.6	9.2%
Unemployment (x 1,000)	312.5	228.8	208.4	-20.4	-8.9%	-104.1	-33.3%
Unemployment rate (rate)	12.9%	9.3%	8.5%	-0.8%		-4.4%	
Participation rate (rate)	69.2%	69.3%	69.0%	-0.3%		-0.2%	
Employment rate (rate)	60.3%	62.8%	63.1%	0.3%		2.8%	

## Province of Alberta

**Table: 14-10-0355-01 (282-0088) Labour force survey estimates (LFS), employment by North American Industry Classification System (NAICS), seasonally adjusted, monthly (persons x 1,000)**

	July 2020	June 2021	July 2021	# Change June 2021 - July 2021	% Change June 2021 - July 2021	# Change July 2020 - July 2021	% Change July 2020 - July 2021
Total Employed - All Industries	2,114.3	2,221.5	2,233.8	12.3	0.6%	119.5	5.7%
Goods-Producing Sector	532.2	539.9	546.5	6.6	1.2%	14.3	2.7%
Agriculture	43.9	35.9	36.0	0.1	0.3%	-7.9	-18.0%
Forestry, Fishing, Mining, Quarrying, Oil and Gas	128.7	144.1	147.7	3.6	2.5%	19.0	14.8%
Utilities	21.6	17.9	17.3	-0.6	-3.4%	-4.3	-19.9%
Construction	216.8	219.0	220.6	1.6	0.7%	3.8	1.8%
Manufacturing	121.2	123.1	124.9	1.8	1.5%	3.7	3.1%
Services-Producing Sector	1,582.1	1,681.5	1,687.2	5.7	0.3%	105.1	6.6%
Wholesale & Retail Trade	301.7	330.4	327.8	-2.6	-0.8%	26.1	8.7%
Transportation and Warehousing	117.3	118.3	126.3	8.0	6.8%	9.0	7.7%
Finance, Insurance, Real Estate and Leasing	105.8	118.3	122.0	3.7	3.1%	16.2	15.3%
Professional, Scientific and Technical Services	166.6	182.0	185.5	3.5	1.9%	18.9	11.3%
Business, Building and Other Support Services	72.4	74.4	72.3	-2.1	-2.8%	-0.1	-0.1%
Educational Services	135.3	175.4	172.7	-2.7	-1.5%	37.4	27.6%
Health Care and Social Assistance	294.6	294.1	292.3	-1.8	-0.6%	-2.3	-0.8%
Information, Culture and Recreation	74.1	60.5	65.4	4.9	8.1%	-8.7	-11.7%
Accommodation and Food Services	114.2	127.3	126.5	-0.8	-0.6%	12.3	10.8%
Other Services	101.7	100.5	96.8	-3.7	-3.7%	-4.9	-4.8%
Public Administration	98.6	100.4	99.8	-0.6	-0.6%	1.2	1.2%

## CANADA

**Table: 14-10-0287-01 (282-0087) Labour force survey estimates (LFS), by sex and age group, seasonally adjusted, monthly (persons unless otherwise noted)**

	July 2020	June 2021	July 2021	# Change June 2021 - July 2021	% Change June 2021 - July 2021	# Change July 2020 - July 2021	% Change July 2020 - July 2021
Population (x 1,000)	31,061.6	31,283.3	31,315.3	32.0	0.1%	253.7	0.8%
Labour force (x 1,000)	19,985.3	20,381.5	20,405.3	23.8	0.12%	420.0	2.1%
Employment (x 1,000)	17,802.6	18,789.9	18,883.9	94.0	0.500%	1,081.3	6.1%
Employment full-time (x 1,000)	14,454.1	15,219.5	15,302.5	83.0	0.5%	848.4	5.9%
Employment part-time (x 1,000)	3,348.4	3,570.4	3,581.4	11.0	0.3%	233.0	7.0%
Unemployment (x 1,000)	2,182.8	1,591.6	1,521.4	-70.2	-4.4%	-661.4	-30.3%
Unemployment rate (rate)	10.9%	7.8%	7.5%	-0.3%		-3.4%	
Participation rate (rate)	64.3%	65.2%	65.2%	0.0%		0.9%	
Employment rate (rate)	57.3%	60.1%	60.3%	0.2%		3.0%	

## CANADA

**Table: 14-10-0355-01 (282-0088) Labour force survey estimates (LFS), employment by North American Industry Classification System (NAICS), seasonally adjusted, monthly (persons x 1,000)**

	July 2020	June 2021	July 2021	# Change June 2021 - July 2021	% Change June 2021 - July 2021	# Change July 2020 - July 2021	% Change July 2020 - July 2021
Total Employed - All Industries	17,802.6	18,789.9	18,883.9	94.0	0.5%	1,081.3	6.1%
Goods-Producing Sector	3,729.0	3,850.1	3,851.1	1.0	0.0%	122.1	3.3%
Agriculture	273.6	257.9	253.7	-4.2	-1.6%	-19.9	-7.3%
Forestry, Fishing, Mining, Quarrying, Oil and Gas	310.5	327.8	329.1	1.3	0.4%	18.6	6.0%
Utilities	132.6	140.7	139.6	-1.1	-0.8%	7.0	5.3%
Construction	1,365.2	1,416.2	1,412.3	-3.9	-0.3%	47.1	3.5%
Manufacturing	1,647.2	1,707.6	1,716.4	8.8	0.5%	69.2	4.2%
Services-Producing Sector	14,073.6	14,939.8	15,032.7	92.9	0.6%	959.1	6.8%
Wholesale and retail trade	2,712.6	2,811.9	2,824.9	13.0	0.5%	112.3	4.1%
Transportation and Warehousing	923.4	972.7	983.3	10.6	1.1%	59.9	6.5%
Finance, Insurance, Real Estate and Leasing	1,223.2	1,290.6	1,305.4	14.8	1.1%	82.2	6.7%
Professional, Scientific and Technical Services	1,495.2	1,671.8	1,676.8	5.0	0.3%	181.6	12.1%
Business, Building and Other Support Services	684.0	716.2	722.7	6.5	0.9%	38.7	5.7%
Educational Services	1,289.0	1,457.6	1,444.7	-12.9	-0.9%	155.7	12.1%
Health Care and Social Assistance	2,444.4	2,561.3	2,574.4	13.1	0.5%	130.0	5.3%
Information, Culture and Recreation	667.4	702.4	705.6	3.2	0.5%	38.2	5.7%
Accommodation and Food Services	929.9	957.9	993.1	35.2	3.7%	63.2	6.8%
Other Services	725.7	746.2	747.0	0.8	0.1%	21.3	2.9%
Public Administration	978.7	1,051.2	1,054.9	3.7	0.4%	76.2	7.8%

### Unemployment Rates for Key Markets

	July 2020	June 2021	July 2021
<b>Calgary</b>	15.5%	9.2%	9.8%
<b>Alberta</b>	12.9%	9.3%	8.5%
<b>Canada</b>	10.9%	7.8%	7.5%
<b>Montreal</b>	13.0%	7.7%	7.5%
<b>Ottawa</b>	9.3%	7.8%	7.1%
<b>Toronto</b>	14.8%	7.8%	7.1%
<b>Edmonton</b>	15.1%	9.7%	8.8%
<b>Vancouver</b>	13.6%	7.5%	7.6%
<b>Winnipeg</b>	11.2%	7.9%	7.4%
<b>Regina</b>	10.8%	6.8%	6.1%
<b>Saskatoon</b>	12.7%	7.3%	7.9%
<b>Wood Buffalo</b>			



# Facts & Figures

**Highest Unemployment Rate during 2008-2010 downturn:** 7.5% in January 2010

**Highest Unemployment Rate during 1992-1996 downturn:** 10.8% in July 1993  
Number of additional jobs we would need to lose to reach this level: 9,334  
(or amount labour force would need to grow by with no additional new jobs)

**Highest Unemployment Rate during 1982-1985 downturn:** 13.2% in March 1983  
Number of additional jobs we would need to lose to reach this level: 30,674  
(or amount labour force would need to grow by with no additional new jobs)

## The last time Calgary had negative employment growth:

Between November 2009 and May 2010 Calgary lost 12,900 jobs.  
Between November 2008 and July 2009 Calgary lost 27,000 jobs.  
From peak employment in November 2008 to the lowest level reached in May 2010 - 33,400 jobs were lost in Calgary.

Calgary lost a small number of jobs July-August 2012 (2,400), again in March 2013 (3,200), and again (3,300) in February to April 2014.

## Calgary

<b>Number of jobs gained/lost in 2014:</b>	11,300
<b>Number of jobs gained/lost in 2015:</b>	(16,200)
<b>Number of jobs gained/lost December 2014 to June 2016:</b>	(23,100)
<b>Number of jobs gained/lost in 2016:</b>	12,700
<b>Number of jobs gained/lost in 2017:</b>	14,400
<b>Number of jobs gained/lost in 2018:</b>	8,800
<b>Number of jobs gained/lost in 2019:</b>	14,400
<b>Number of jobs gained/lost in 2020:</b>	(5,600)
<b>Number of jobs gained/lost in 2021 (to-date):</b>	(18,600)

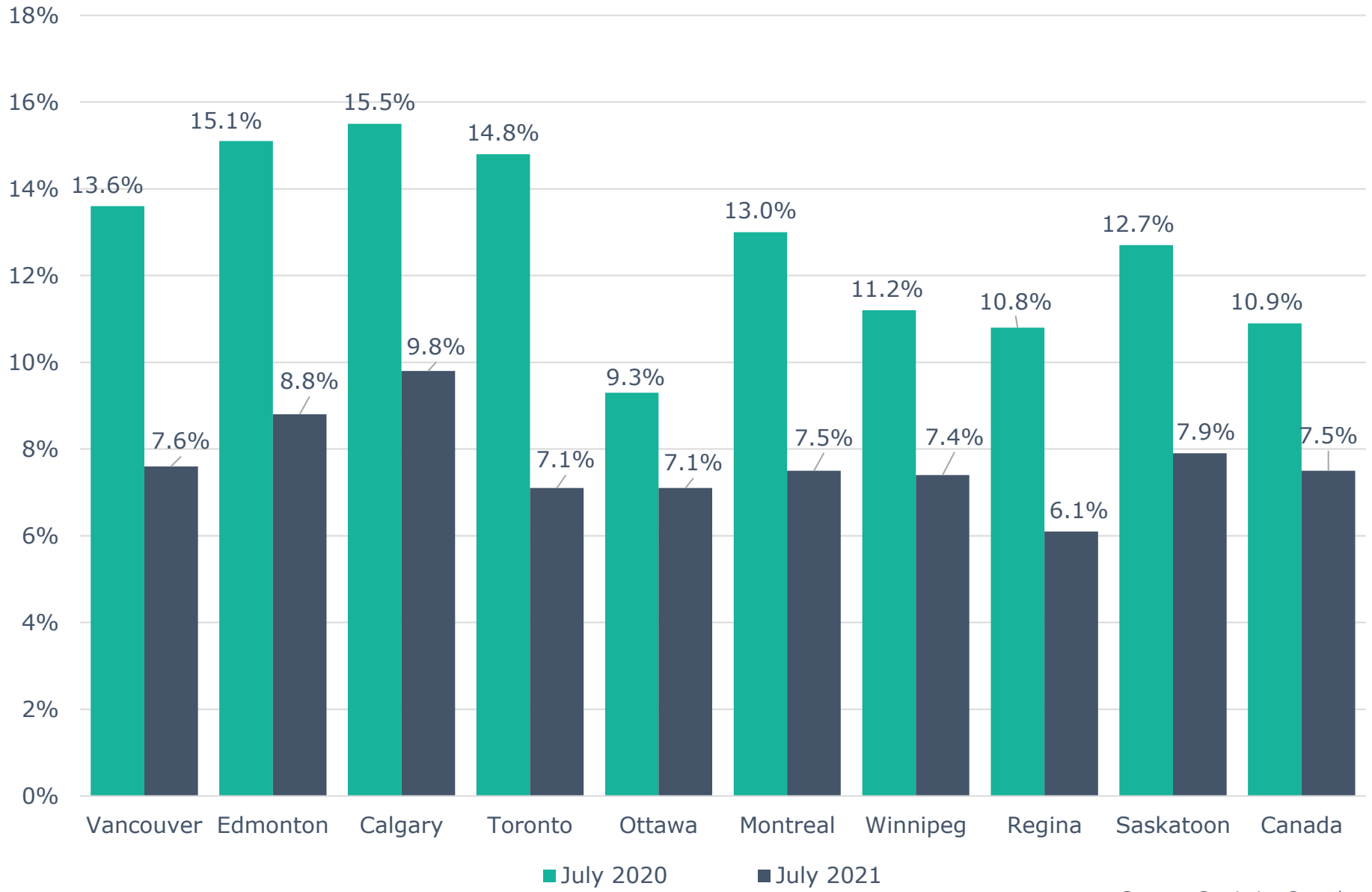
## Alberta

<b>Number of jobs gained/lost in 2014:</b>	46,000
<b>Number of jobs gained/lost in 2015:</b>	(40,100)
<b>Number of jobs gained/lost December 2014 to June 2016:</b>	(73,800)
<b>Number of jobs gained/lost in 2016:</b>	(21,500)
<b>Number of jobs gained/lost in 2017:</b>	57,300
<b>Number of jobs gained/lost in 2018:</b>	21,000
<b>Number of jobs gained/lost in 2019:</b>	1,500
<b>Number of jobs gained/lost in 2020:</b>	(109,900)
<b>Number of jobs gained/lost in 2021 (to-date):</b>	73,200

Source: Calgary - Table 14-10-0294-02 (282-0135); Alberta - 14-10-0287-01 (282-0087); Statistics Canada

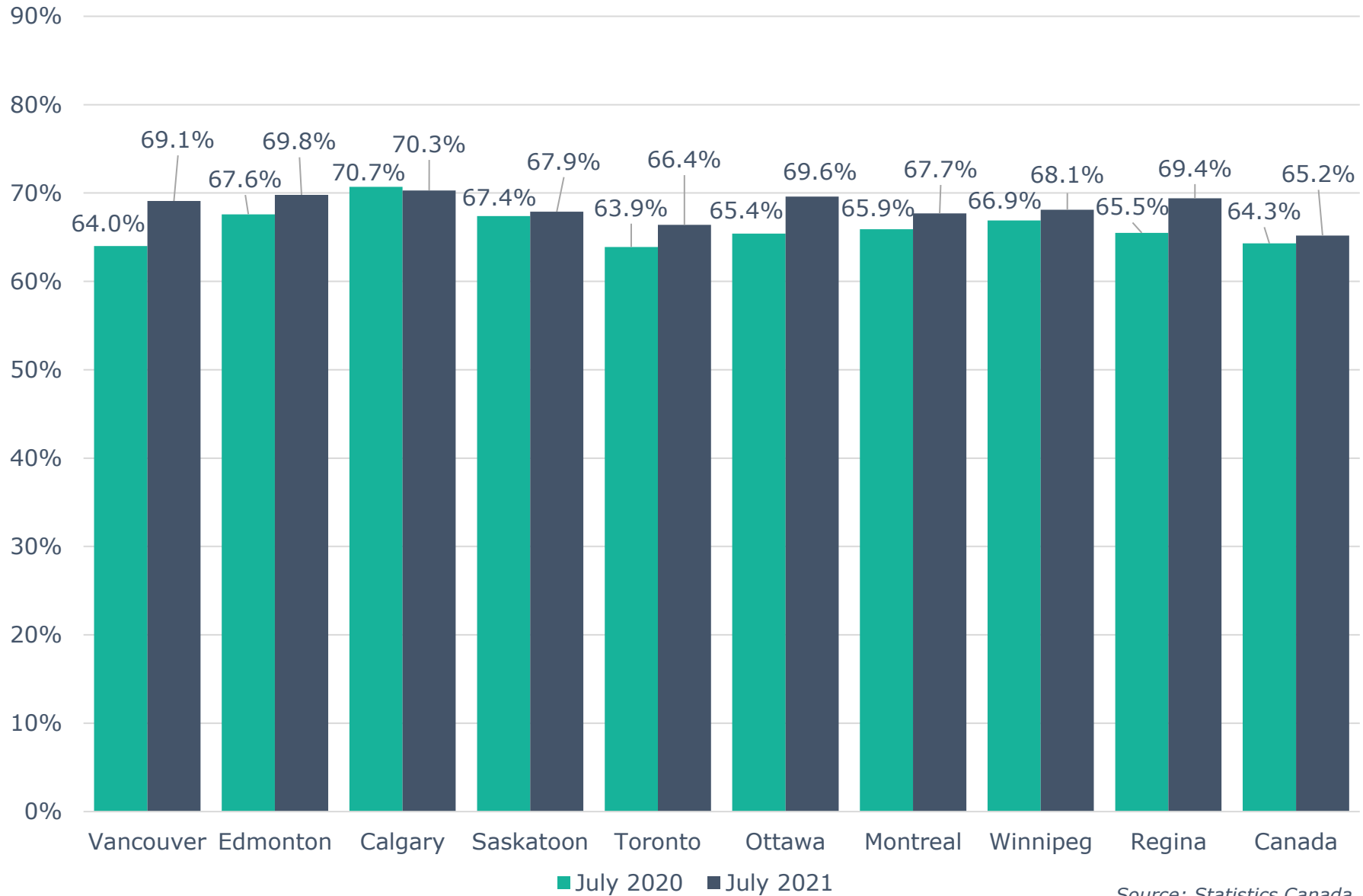
Note: Labour Force Survey, Employment, Seasonally Adjusted

# Unemployment Rate Across Canada



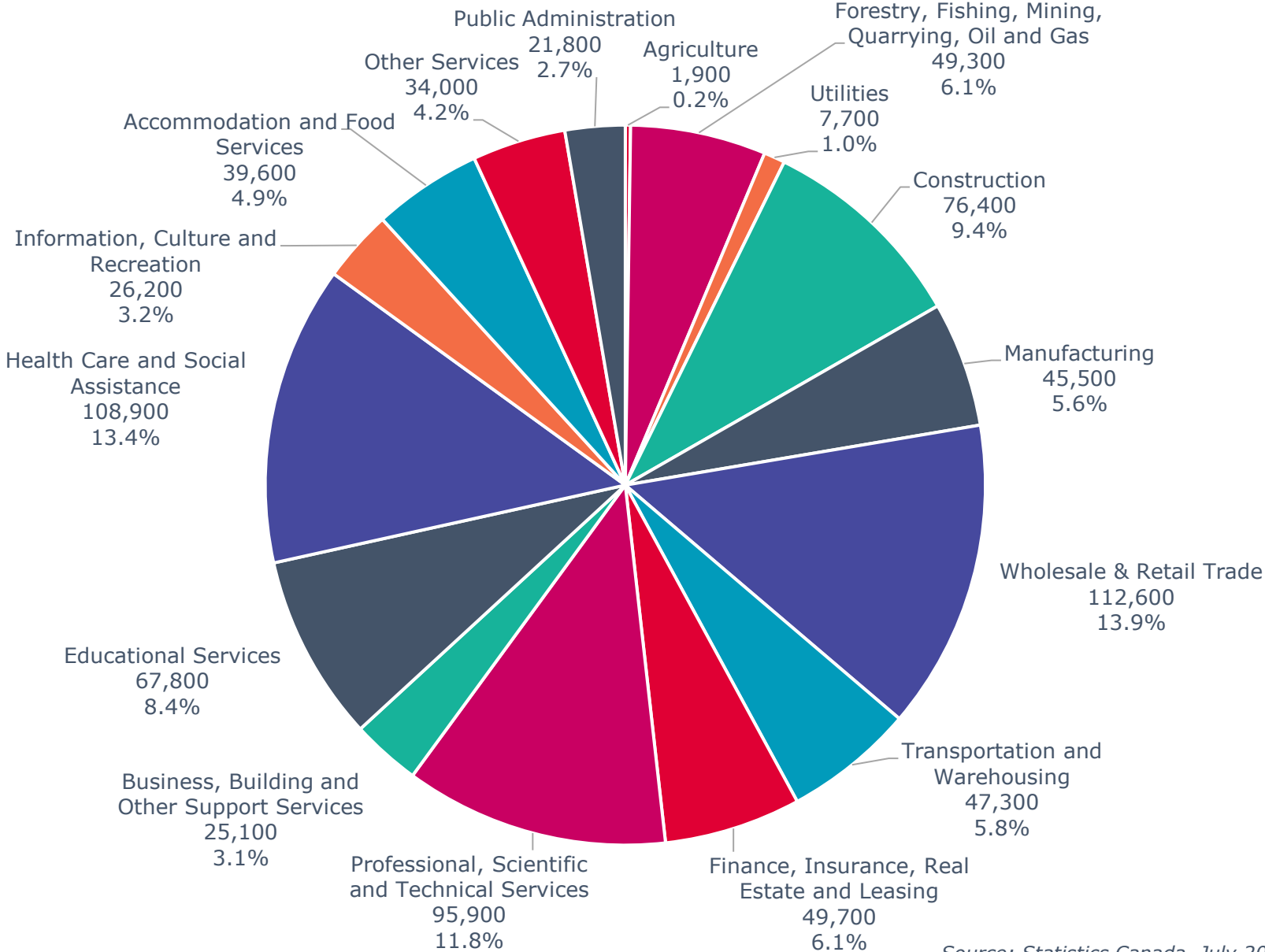
Source: Statistics Canada

# Labour Force Participation Rate Across Canada



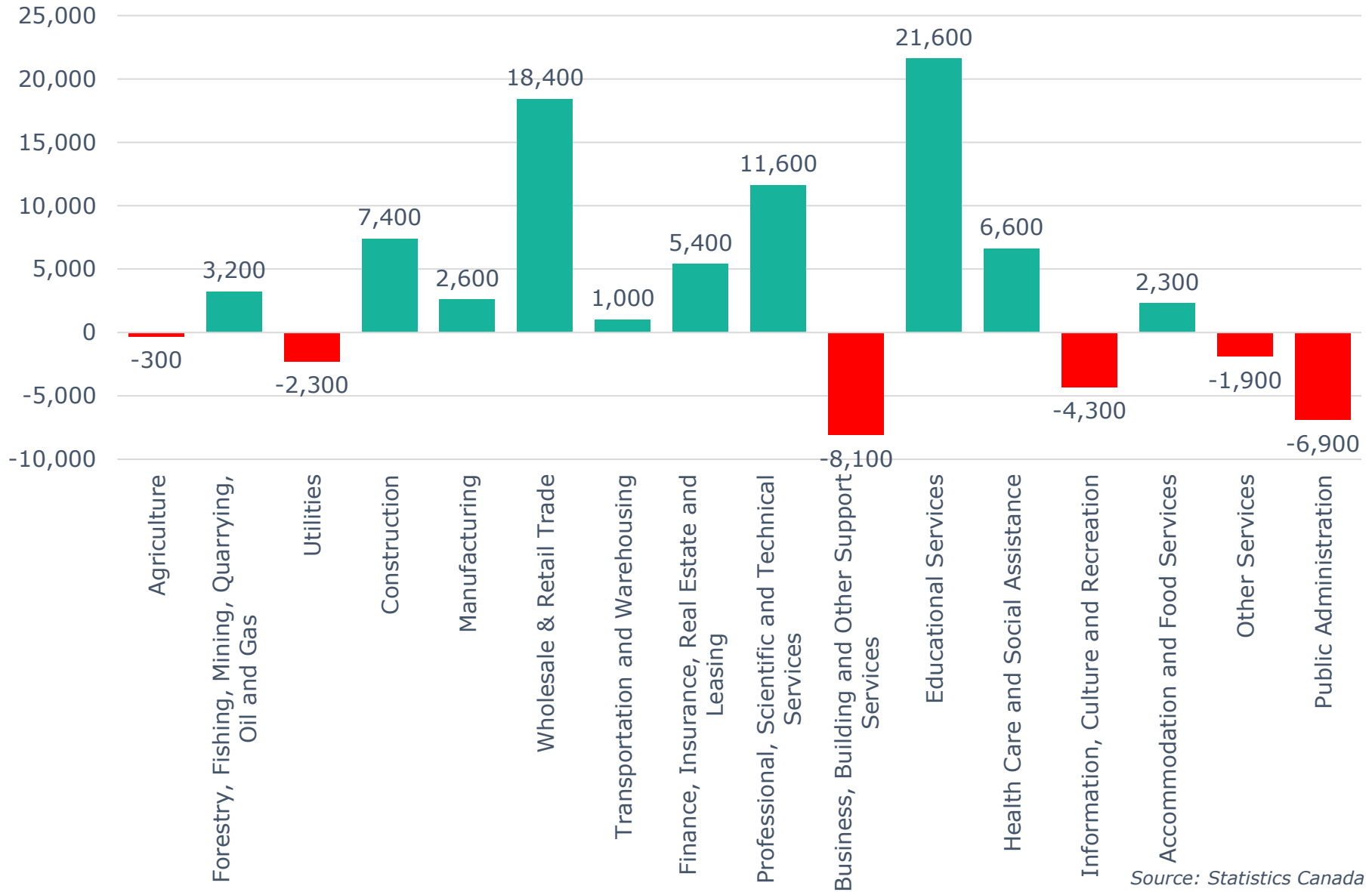
Source: Statistics Canada

# Calgary CMA Employment by Industry (809,700)



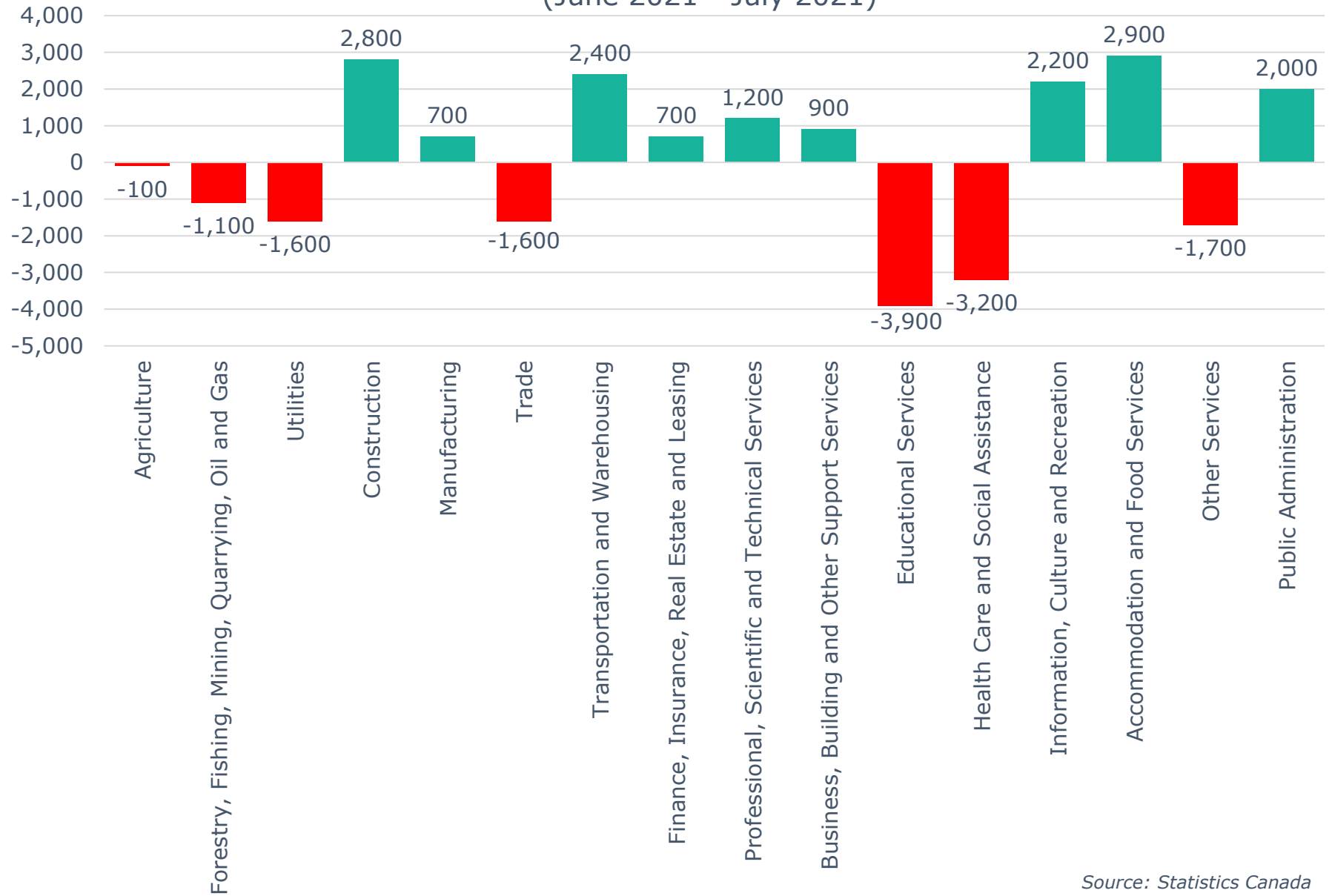
Source: Statistics Canada, July 2021

# Calgary CMA 12-Month Net Jobs Gained or Lost by Industry (July 2021)



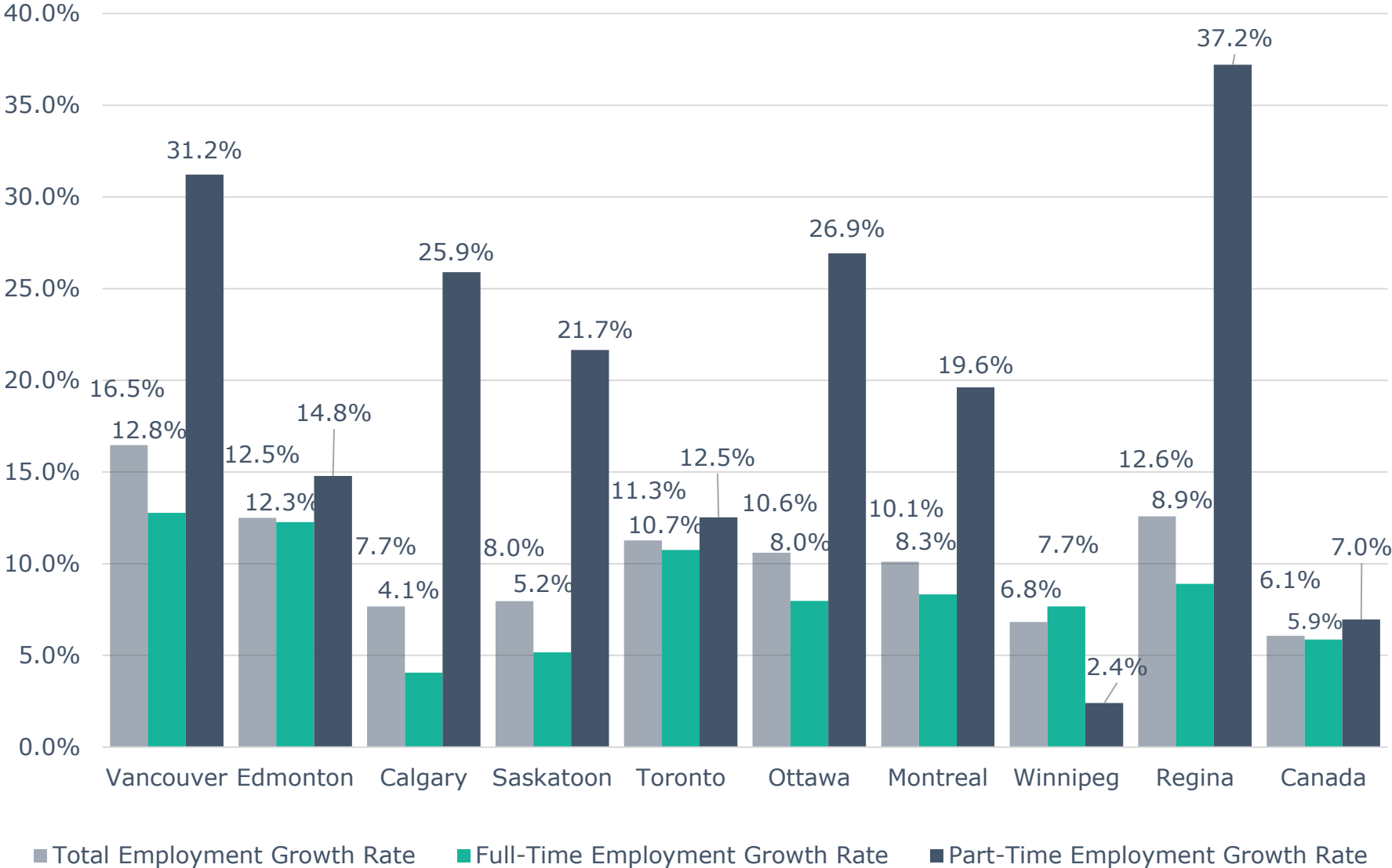
Source: Statistics Canada

## Calgary CMA Monthly Net Jobs Gained or Lost by Industry (June 2021 - July 2021)



Source: Statistics Canada

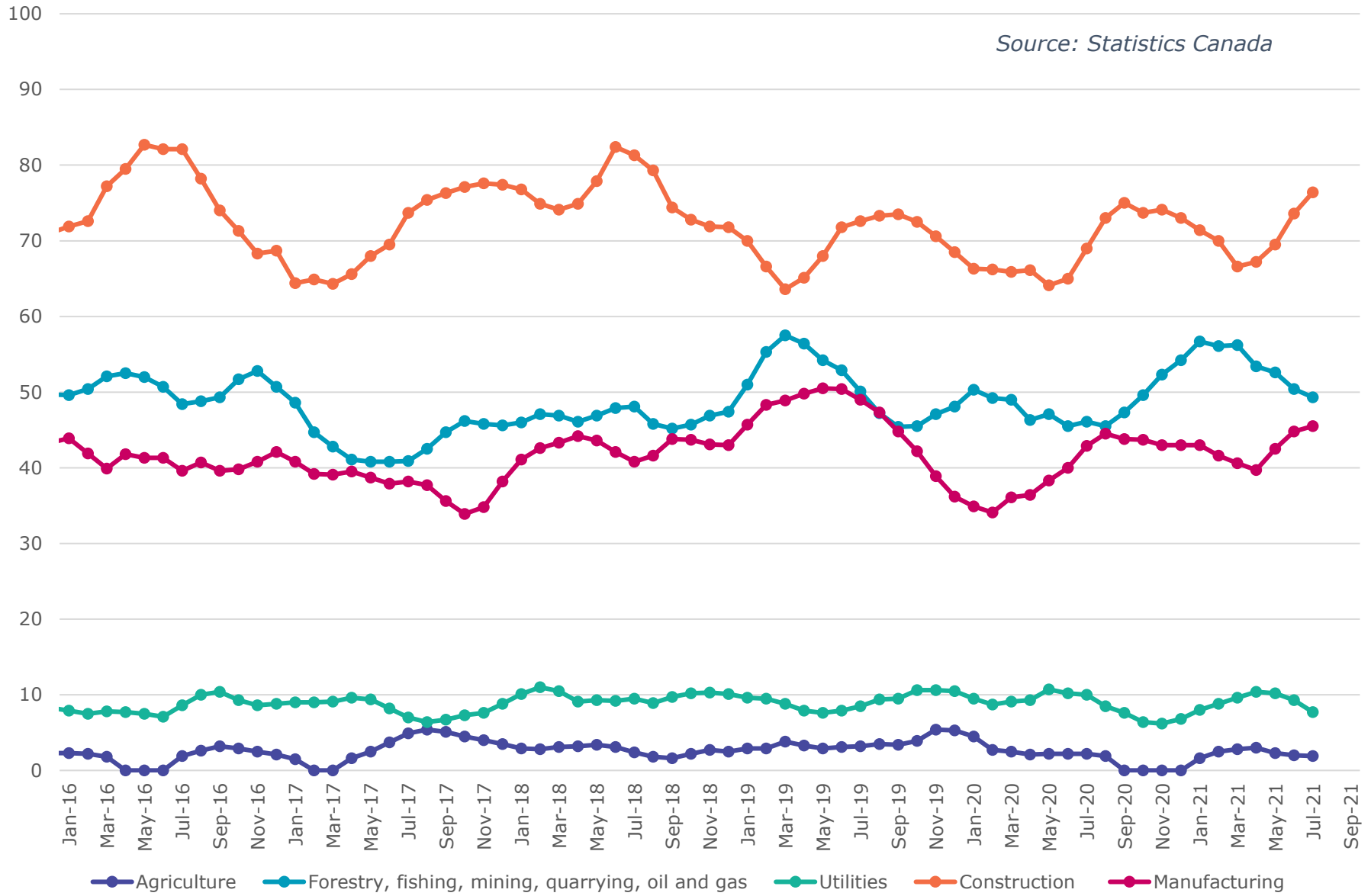
# Annual Employment Growth



Source: Statistics Canada, July 2020 - July 2021

# Calgary CMA Goods Producing Sectors - Number of Employees (In thousands)

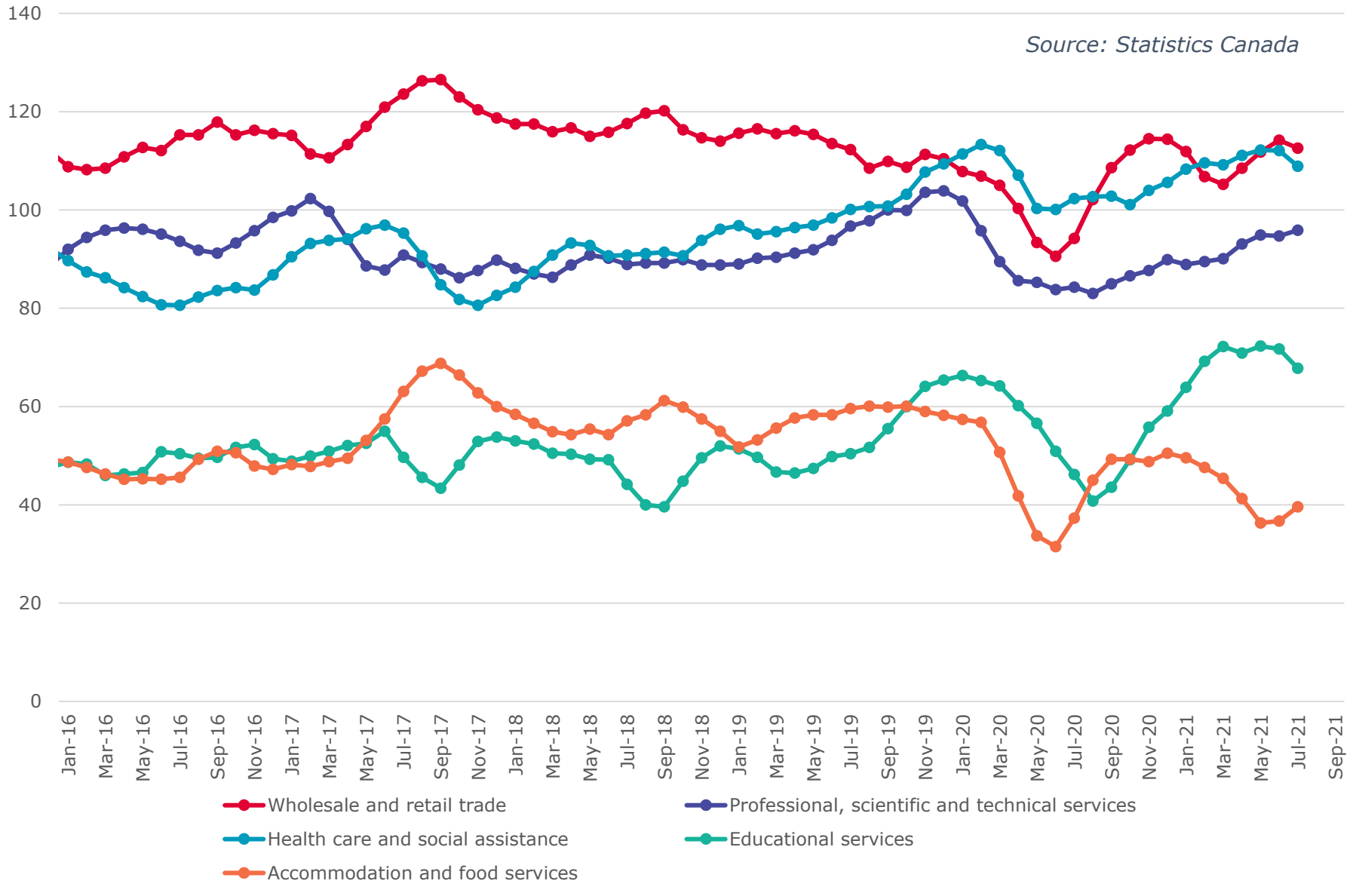
*Source: Statistics Canada*





# Calgary CMA Largest 5 Services Sector by Number of Employees (In thousands)

Source: Statistics Canada



### Calgary CMA Smallest 6 Service Sectors by Number of Employees (In thousands)

