



Labour Force Survey Statistics February 2023

CALGARY CMA

Table 14-10-0380-02 (282-0135) Labour force survey estimates (LFS), by census metropolitan area based on 2011 census boundaries, 3-month moving average, seasonally adjusted, monthly (persons unless otherwise noted)

	February 2022	January 2023	February 2023	# Change January 2023 - February 2023	% Change January 2023 - February 2023	# Change February 2022 - February 2023	% Change February 2022 - February 2023
Population (x 1,000)	1,280.5	1,318.4	1,322.8	4.4	0.3%	42.3	3.3%
Labour force (x 1,000)	914.6	933.0	928.7	-4.3	-0.5%	14.1	1.5%
Employment (x 1,000)	841.1	871.4	867.8	-3.6	-0.4%	26.7	3.2%
Unemployment (x 1,000)	73.5	61.6	61.0	-0.6	-1.0%	-12.5	-17.0%
Unemployment rate (rate)	8.0%	6.6%	6.6%	0.0%		-1.4%	
Participation rate (rate)	71.4%	70.8%	70.2%	-0.6%		-1.2%	
Employment rate (rate)	65.7%	66.1%	65.6%	-0.5%		-0.1%	

CALGARY CMA

Table 14-10-0378-01 (282-0128) Labour force survey estimates (LFS), by census metropolitan area based on 2011 census boundaries, 3-month moving average, unadjusted for seasonality, monthly (persons unless otherwise noted)

	February 2022	January 2023	February 2023	# Change January 2023 - February 2023	% Change January 2023 - February 2023	# Change February 2022 - February 2023	% Change February 2022 - February 2023
Population (x 1,000)	1,280.5	1,318.4	1,322.8	4.4	0.3%	42.3	3.3%
Labour force (x 1,000)	906.6	931.3	922.0	-9.3	-1.0%	15.4	1.7%
Employment (x 1,000)	837.2	871.0	860.2	-10.8	-1.2%	23.0	2.7%
Full-time employment (x 1,000)	669.5	722.5	708.8	-13.7	-1.9%	39.3	5.9%
Part-time employment (x 1,000)	167.6	148.5	151.5	3.0	2.0%	-16.1	-9.6%
Unemployment (x 1,000)	69.4	60.3	61.8	1.5	2.5%	-7.6	-11.0%
Not in labour force (x 1,000)	373.9	387.0	400.7	13.7	3.5%	26.8	7.2%
Unemployment rate (rate)	7.7%	6.5%	6.7%	0.2%		-1.0%	
Participation rate (rate)	70.8%	70.6%	69.7%	-0.9%		-1.1%	
Employment rate (rate)	65.4%	66.1%	65.0%	-1.1%		-0.4%	

CALGARY CMA

Table: 14-10-0397-01 (282-0130) Labour force survey estimates (LFS), employment by census metropolitan area based on 2011 census boundaries and North American Industry Classification System (NAICS), 3-month moving average, unadjusted for seasonality, monthly (persons x 1,000)

	February 2022	January 2023	February 2023	# Change January 2023 - February 2023	% Change January 2023 - February 2023	# Change February 2022 - February 2023	% Change February 2022 - February 2023
Total Employed - All Industries	843.6	871.0	860.2	-10.8	-1.2%	16.6	2.0%
Goods-Producing Sector	179.1	155.5	156.5	1.0	0.6%	-22.6	-12.6%
Agriculture	3.0	3.0	3.2	0.2	6.7%	0.2	6.7%
Forestry, Fishing, Mining, Quarrying, Oil and Gas	53.7	45.1	45.4	0.3	0.7%	-8.3	-15.5%
Utilities	7.0	7.5	7.5	0.0	0.0%	0.5	7.1%
Construction	81.4	70.6	69.7	-0.9	-1.3%	-11.7	-14.4%
Manufacturing	34.0	29.3	30.7	1.4	4.8%	-3.3	-9.7%
Services-Producing Sector	664.5	715.5	703.7	-11.8	-1.6%	39.2	5.9%
Wholesale & Retail Trade	136.6	125.0	120.5	-4.5	-3.6%	-16.1	-11.8%
Transportation and Warehousing	52.7	61.4	58.9	-2.5	-4.1%	6.2	11.8%
Finance, Insurance, Real Estate and Leasing	54.1	54.5	54.1	-0.4	-0.7%	0.0	0.0%
Professional, Scientific and Technical Services	98.4	122.8	124.0	1.2	1.0%	25.6	26.0%
Business, Building and Other Support Services	23.8	26.1	26.4	0.3	1.1%	2.6	10.9%
Educational Services	63.9	63.8	63.4	-0.4	-0.6%	-0.5	-0.8%
Health Care and Social Assistance	107.9	121.9	117.4	-4.5	-3.7%	9.5	8.8%
Information, Culture and Recreation	35.7	30.8	32.0	1.2	3.9%	-3.7	-10.4%
Accommodation and Food Services	40.7	47.3	43.3	-4.0	-8.5%	2.6	6.4%
Other Services	23.7	31.8	34.1	2.3	7.2%	10.4	43.9%
Public Administration	27.0	30.1	29.6	-0.5	-1.7%	2.6	9.6%

Province of Alberta

Table: 14-10-0287-01 (282-0087) Labour force survey estimates (LFS), by sex and age group, seasonally adjusted, monthly (persons unless otherwise noted)

	February 2022	January 2023	February 2023	# Change January 2023 - February 2023	% Change January 2023 - February 2023	# Change February 2022 - February 2023	% Change February 2022 - February 2023
Population (x 1,000)	3,580.2	3,678.4	3,689.2	10.8	0.3%	109.0	3.0%
Labour force (x 1,000)	2,515.8	2,585.6	2,582.2	-3.4	-0.13%	66.4	2.6%
Employment (x 1,000)	2,354.4	2,429.7	2,431.3	1.6	0.1%	76.9	3.3%
Employment full-time (x 1,000)	1,897.5	1,977.4	1,988.3	10.9	0.6%	90.8	4.8%
Employment part-time (x 1,000)	456.9	452.3	443.0	-9.3	-2.1%	-13.9	-3.0%
Unemployment (x 1,000)	161.4	155.9	150.8	-5.1	-3.3%	-10.6	-6.6%
Unemployment rate (rate)	6.4%	6.0%	5.8%	-0.2%		-0.6%	
Participation rate (rate)	70.3%	70.3%	70.0%	-0.3%		-0.3%	
Employment rate (rate)	65.8%	66.1%	65.9%	-0.2%		0.1%	

Province of Alberta

Table: 14-10-0355-01 (282-0088) Labour force survey estimates (LFS), employment by North American Industry Classification System (NAICS), seasonally adjusted, monthly (persons x 1,000)

	February 2022	January 2023	February 2023	# Change January 2023 - February 2023	% Change January 2023 - February 2023	# Change February 2022 - February 2023	% Change February 2022 - February 2023
Total Employed - All Industries	2,354.4	2,429.7	2,431.3	1.6	0.1%	76.9	3.3%
Goods-Producing Sector	572.8	576.2	583.0	6.8	1.2%	10.2	1.8%
Agriculture	40.1	49.1	47.7	-1.4	-2.9%	7.6	19.0%
Forestry, Fishing, Mining, Quarrying, Oil and Gas	146.6	131.1	135.8	4.7	3.6%	-10.8	-7.4%
Utilities	17.2	20.1	21.9	1.8	9.0%	4.7	27.3%
Construction	238.5	239.0	233.2	-5.8	-2.4%	-5.3	-2.2%
Manufacturing	130.4	136.8	144.3	7.5	5.5%	13.9	10.7%
Services-Producing Sector	1,781.6	1,853.5	1,848.4	-5.1	-0.3%	66.8	3.7%
Wholesale & Retail Trade	354.8	368.0	353.9	-14.1	-3.8%	-0.9	-0.3%
Transportation and Warehousing	124.8	132.8	140.9	8.1	6.1%	16.1	12.9%
Finance, Insurance, Real Estate and Leasing	123.5	125.4	125.4	0.0	0.0%	1.9	1.5%
Professional, Scientific and Technical Services	206.8	251.2	250.8	-0.4	-0.2%	44.0	21.3%
Business, Building and Other Support Services	74.7	72.7	73.1	0.4	0.6%	-1.6	-2.1%
Educational Services	175.0	169.0	161.4	-7.6	-4.5%	-13.6	-7.8%
Health Care and Social Assistance	311.8	312.8	319.1	6.3	2.0%	7.3	2.3%
Information, Culture and Recreation	85.0	81.4	85.2	3.8	4.7%	0.2	0.2%
Accommodation and Food Services	127.4	124.1	122.7	-1.4	-1.1%	-4.7	-3.7%
Other Services	92.9	100.1	98.1	-2.0	-2.0%	5.2	5.6%
Public Administration	105.0	116.1	117.6	1.5	1.3%	12.6	12.0%

CANADA

Table: 14-10-0287-01 (282-0087) Labour force survey estimates (LFS), by sex and age group, seasonally adjusted, monthly (persons unless otherwise noted)

	February 2022	January 2023	February 2023	# Change January 2023 - February 2023	% Change January 2023 - February 2023	# Change February 2022 - February 2023	% Change February 2022 - February 2023
Population (x 1,000)	31,588.7	32,070.4	32,130.5	60.1	0.2%	541.8	1.7%
Labour force (x 1,000)	20,648.2	21,078.3	21,120.5	42.2	0.20%	472.3	2.3%
Employment (x 1,000)	19,512.7	20,032.3	20,054.1	21.8	0.109%	541.4	2.8%
Employment full-time (x 1,000)	15,836.1	16,437.0	16,468.1	31.1	0.2%	632.0	4.0%
Employment part-time (x 1,000)	3,676.6	3,595.3	3,586.0	-9.3	-0.3%	-90.6	-2.5%
Unemployment (x 1,000)	1,135.5	1,046.0	1,066.4	20.4	2.0%	-69.1	-6.1%
Unemployment rate (rate)	5.5%	5.0%	5.0%	0.0%		-0.5%	
Participation rate (rate)	65.4%	65.7%	65.7%	0.0%		0.3%	
Employment rate (rate)	61.8%	62.5%	62.4%	-0.1%		0.6%	

CANADA

Table: 14-10-0355-01 (282-0088) Labour force survey estimates (LFS), employment by North American Industry Classification System (NAICS), seasonally adjusted, monthly (persons x 1,000)

	February 2022	January 2023	February 2023	# Change January 2023 - February 2023	% Change January 2023 - February 2023	# Change February 2022 - February 2023	% Change February 2022 - February 2023
Total Employed - All Industries	19,643.8	20,032.3	20,054.1	21.8	0.1%	410.3	2.1%
Goods-Producing Sector	4,059.3	4,140.9	4,158.4	17.5	0.4%	99.1	2.4%
Agriculture	252.5	263.8	263.6	-0.2	-0.1%	11.1	4.4%
Forestry, Fishing, Mining, Quarrying, Oil and Gas	330.6	324.4	329.4	5.0	1.5%	-1.2	-0.4%
Utilities	143.8	150.0	157.5	7.5	5.0%	13.7	9.5%
Construction	1,538.9	1,610.9	1,609.4	-1.5	-0.1%	70.5	4.6%
Manufacturing	1,793.5	1,791.8	1,798.6	6.8	0.4%	5.1	0.3%
Services-Producing Sector	15,584.5	15,891.5	15,895.7	4.2	0.0%	311.2	2.0%
Wholesale and retail trade	3,018.4	2,959.9	2,957.4	-2.5	-0.1%	-61.0	-2.0%
Transportation and Warehousing	1,008.2	967.3	973.5	6.2	0.6%	-34.7	-3.4%
Finance, Insurance, Real Estate and Leasing	1,355.6	1,394.2	1,386.2	-8.0	-0.6%	30.6	2.3%
Professional, Scientific and Technical Services	1,780.4	1,866.9	1,864.7	-2.2	-0.1%	84.3	4.7%
Business, Building and Other Support Services	690.4	704.9	694.4	-10.5	-1.5%	4.0	0.6%
Educational Services	1,482.0	1,481.2	1,473.5	-7.7	-0.5%	-8.5	-0.6%
Health Care and Social Assistance	2,608.5	2,637.5	2,652.8	15.3	0.6%	44.3	1.7%
Information, Culture and Recreation	817.4	839.5	831.7	-7.8	-0.9%	14.3	1.7%
Accommodation and Food Services	1,016.4	1,114.8	1,117.9	3.1	0.3%	101.5	10.0%
Other Services	708.5	752.1	760.5	8.4	1.1%	52.0	7.3%
Public Administration	1,098.6	1,173.2	1,183.2	10.0	0.9%	84.6	7.7%

Unemployment Rates for Key Markets

	February 2022	January 2023	February 2023
Calgary	8.0%	6.6%	6.6%
Alberta	6.4%	6.0%	5.8%
Canada	5.5%	5.0%	5.0%
Montreal	5.2%	4.5%	4.7%
Ottawa	4.9%	3.8%	4.1%
Toronto	7.4%	3.8%	4.1%
Edmonton	6.9%	5.6%	5.4%
Vancouver	5.4%	4.6%	4.8%
Winnipeg	4.9%	4.3%	4.5%
Regina	5.4%	4.8%	5.0%
Saskatoon	4.8%	4.1%	4.3%
Wood Buffalo			

Facts & Figures

Highest Unemployment Rate during 2008-2010 downturn: 7.5% in January 2010

Highest Unemployment Rate during 1992-1996 downturn: 10.8% in July 1993
 Number of additional jobs we would need to lose to reach this level: 39,300
 (or amount labour force would need to grow by with no additional new jobs)

Highest Unemployment Rate during 1982-1985 downturn: 13.2% in March 1983
 Number of additional jobs we would need to lose to reach this level: 61,588
 (or amount labour force would need to grow by with no additional new jobs)

The last time Calgary had negative employment growth:

Between November 2009 and May 2010 Calgary lost 12,900 jobs.
 Between November 2008 and July 2009 Calgary lost 27,000 jobs.
 From peak employment in November 2008 to the lowest level reached in May 2010 - 33,400 jobs were lost in Calgary.

Calgary lost a small number of jobs July-August 2012 (2,400), again in March 2013 (3,200), and again (3,300) in February to April 2014.

Calgary

Number of jobs gained/lost in 2014: 11,300
Number of jobs gained/lost in 2015: (16,200)
Number of jobs gained/lost December 2014 to June 2016: (23,100)
Number of jobs gained/lost in 2016: 12,700
Number of jobs gained/lost in 2017: 14,400
Number of jobs gained/lost in 2018: 8,800
Number of jobs gained/lost in 2019: 14,400
Number of jobs gained/lost in 2020: (5,600)
Number of jobs gained/lost in 2021: 7,100
Number of jobs gained/lost in 2022: 51,700
Number of jobs gained/lost in 2023 (to-date): (12,100)

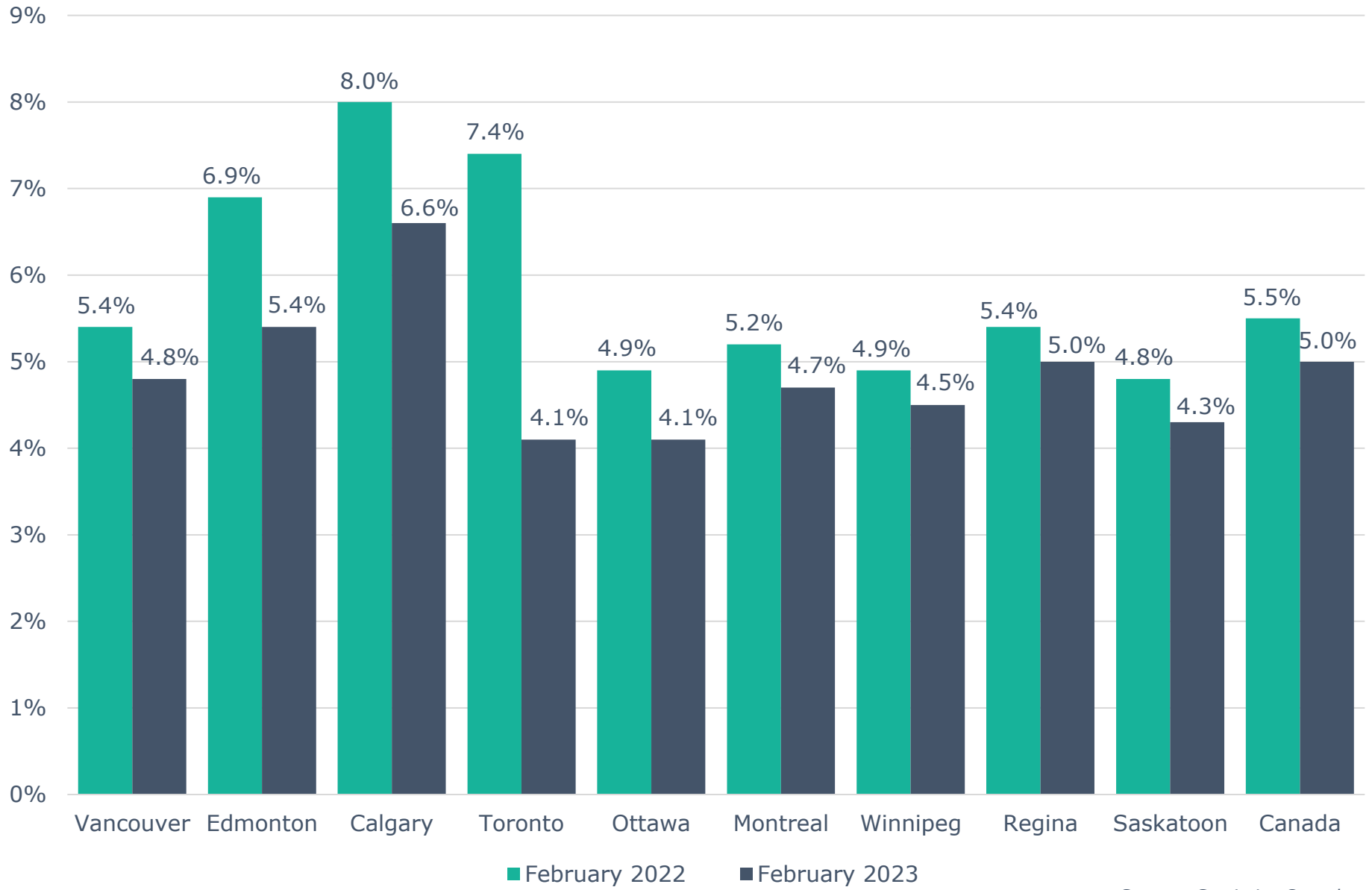
Alberta

Number of jobs gained/lost in 2014: 49,800
Number of jobs gained/lost in 2015: (39,300)
Number of jobs gained/lost December 2014 to June 2016: (67,000)
Number of jobs gained/lost in 2016: (26,100)
Number of jobs gained/lost in 2017: 62,800
Number of jobs gained/lost in 2018: 29,500
Number of jobs gained/lost in 2019: 15,900
Number of jobs gained/lost in 2020: (131,100)
Number of jobs gained/lost in 2021: 146,900
Number of jobs gained/lost in 2022: 81,800
Number of jobs gained/lost in 2023 (to-date): 22,300

Source: Calgary - Table 14-10-0294-02 (282-0135); Alberta - 14-10-0287-01 (282-0087); Statistics Canada

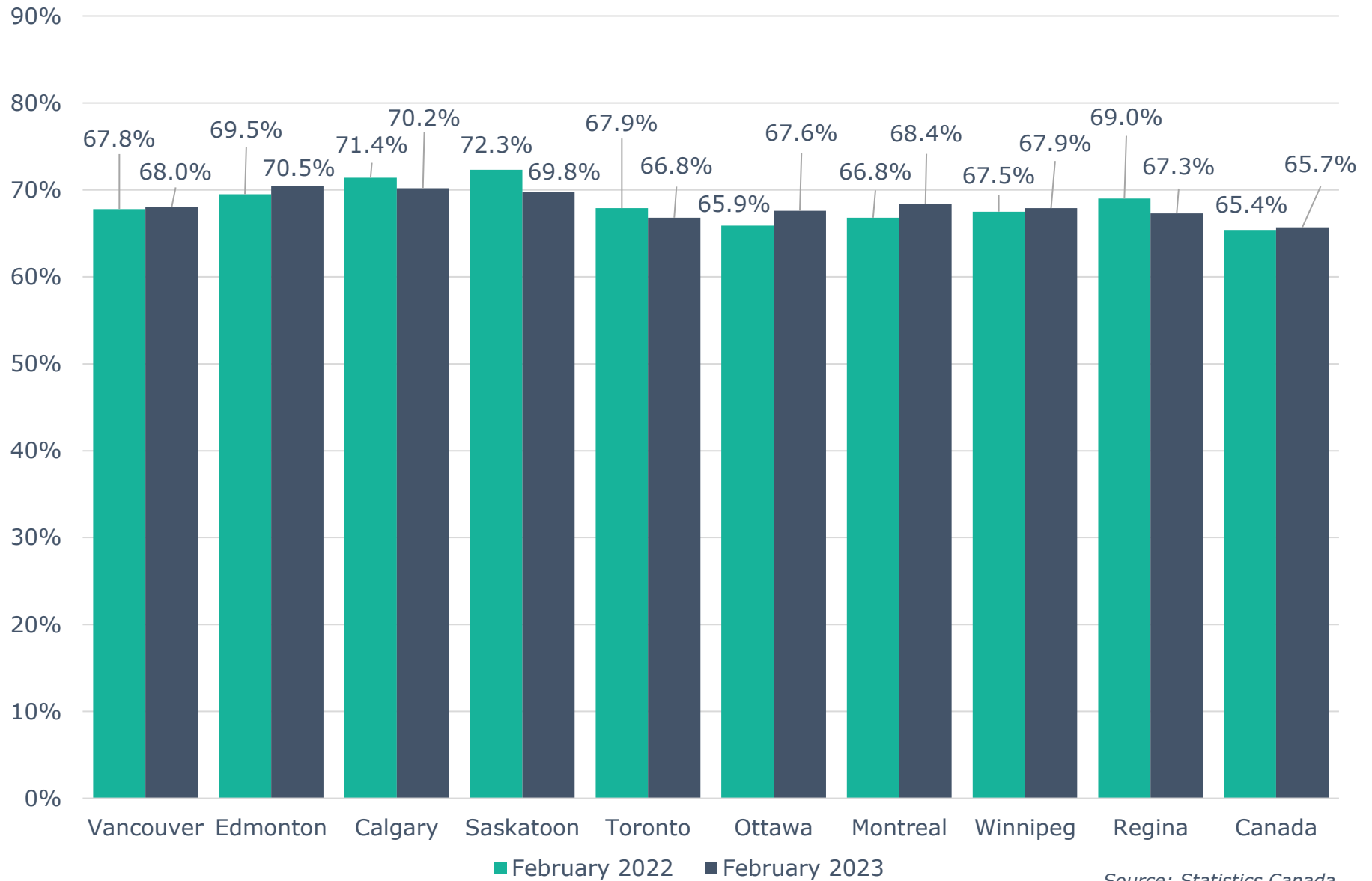
Note: Labour Force Survey, Employment, Seasonally Adjusted

Unemployment Rate Across Canada



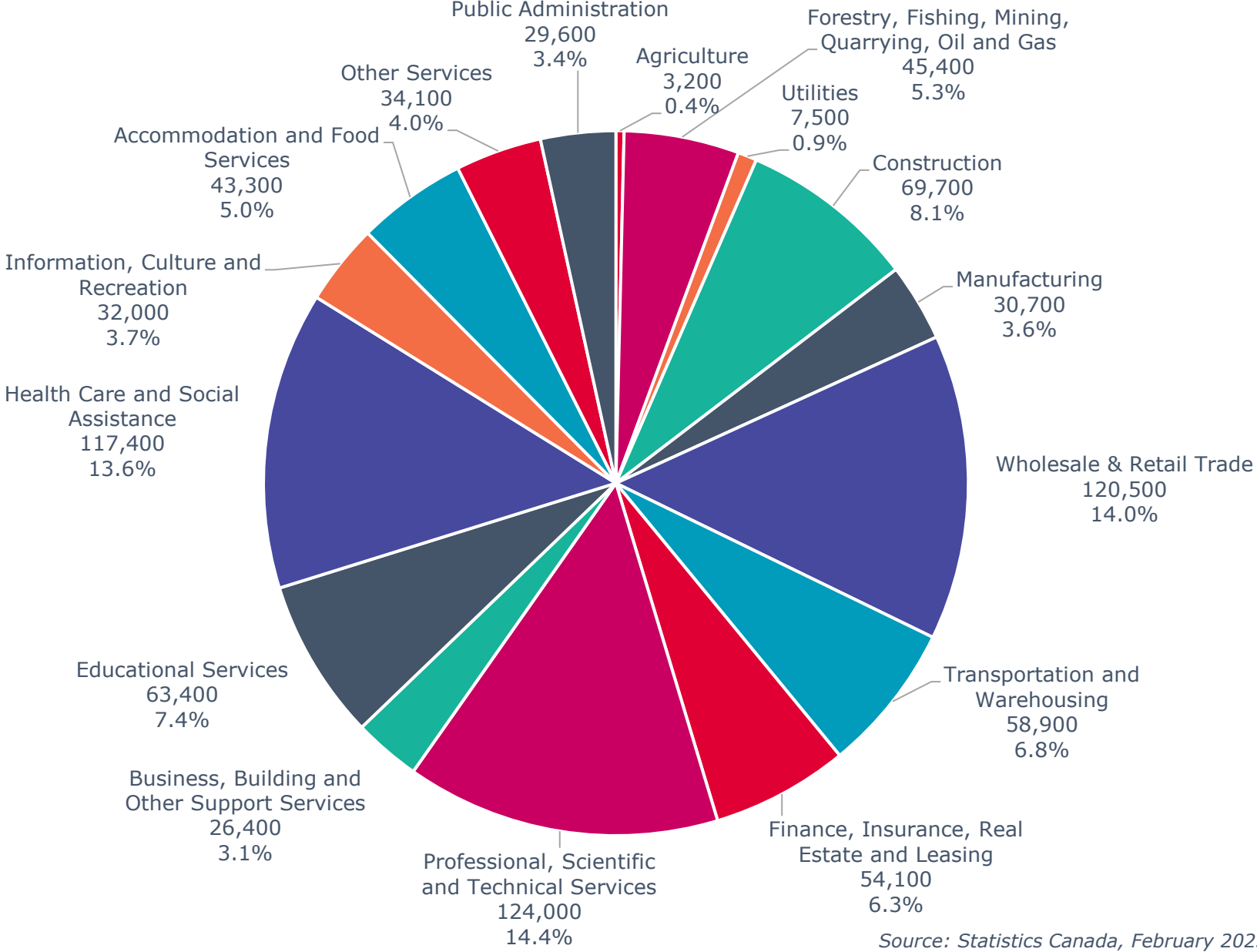
Source: Statistics Canada

Labour Force Participation Rate Across Canada



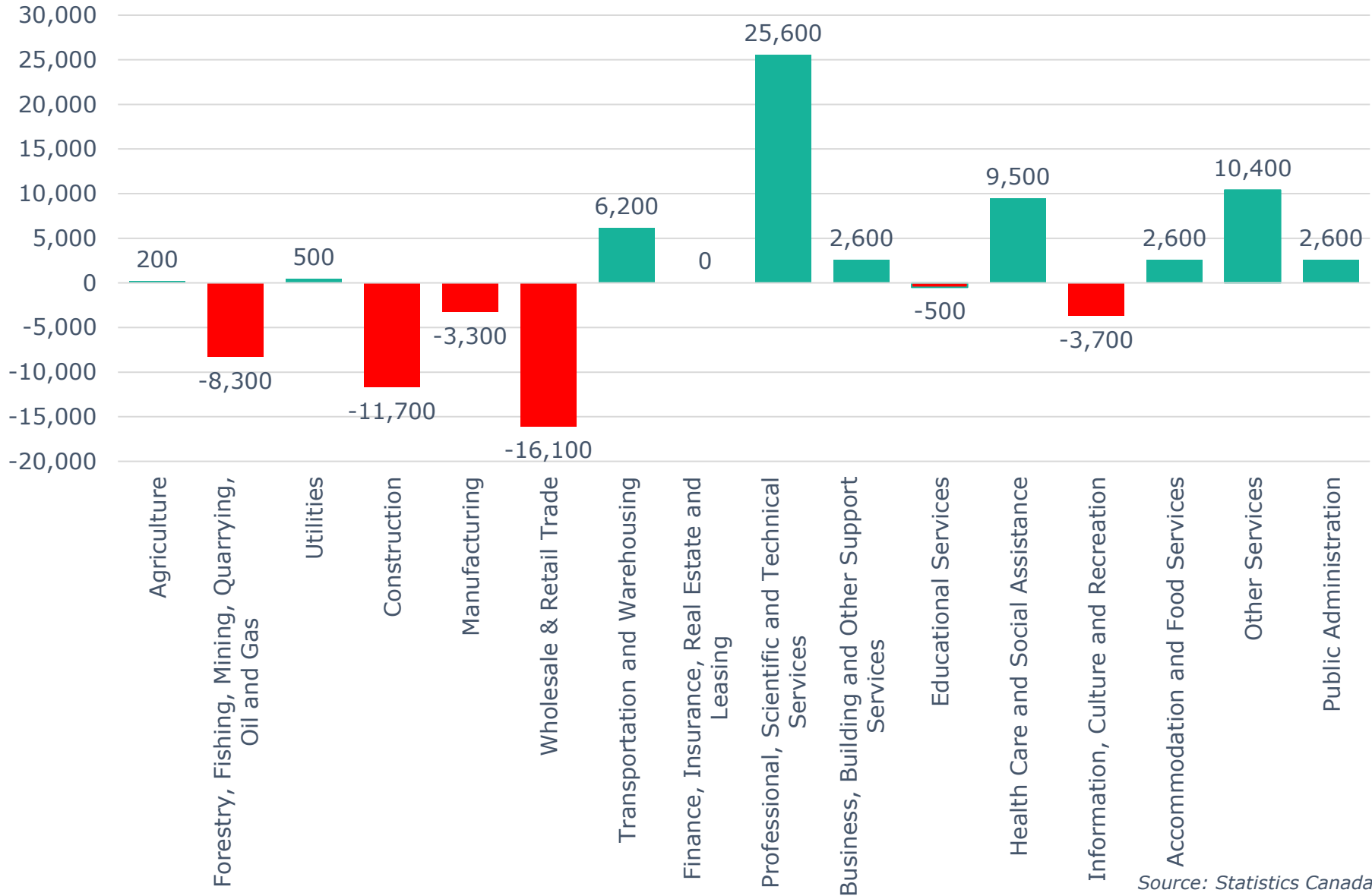
Source: Statistics Canada

Calgary CMA Employment by Industry (860,200)



Source: Statistics Canada, February 2023

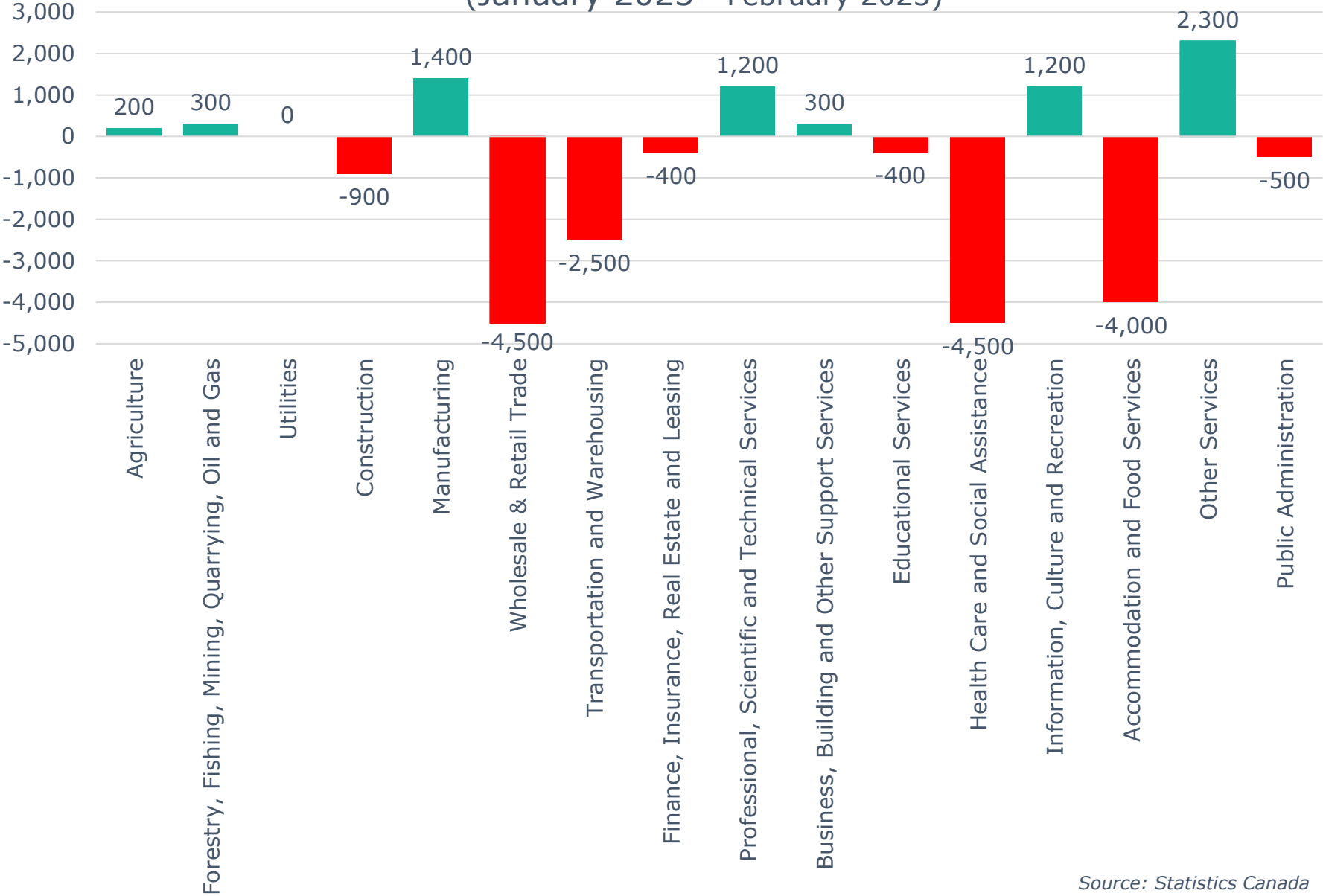
Calgary CMA 12-Month Net Jobs Gained or Lost by Industry (February 2023)



Source: Statistics Canada

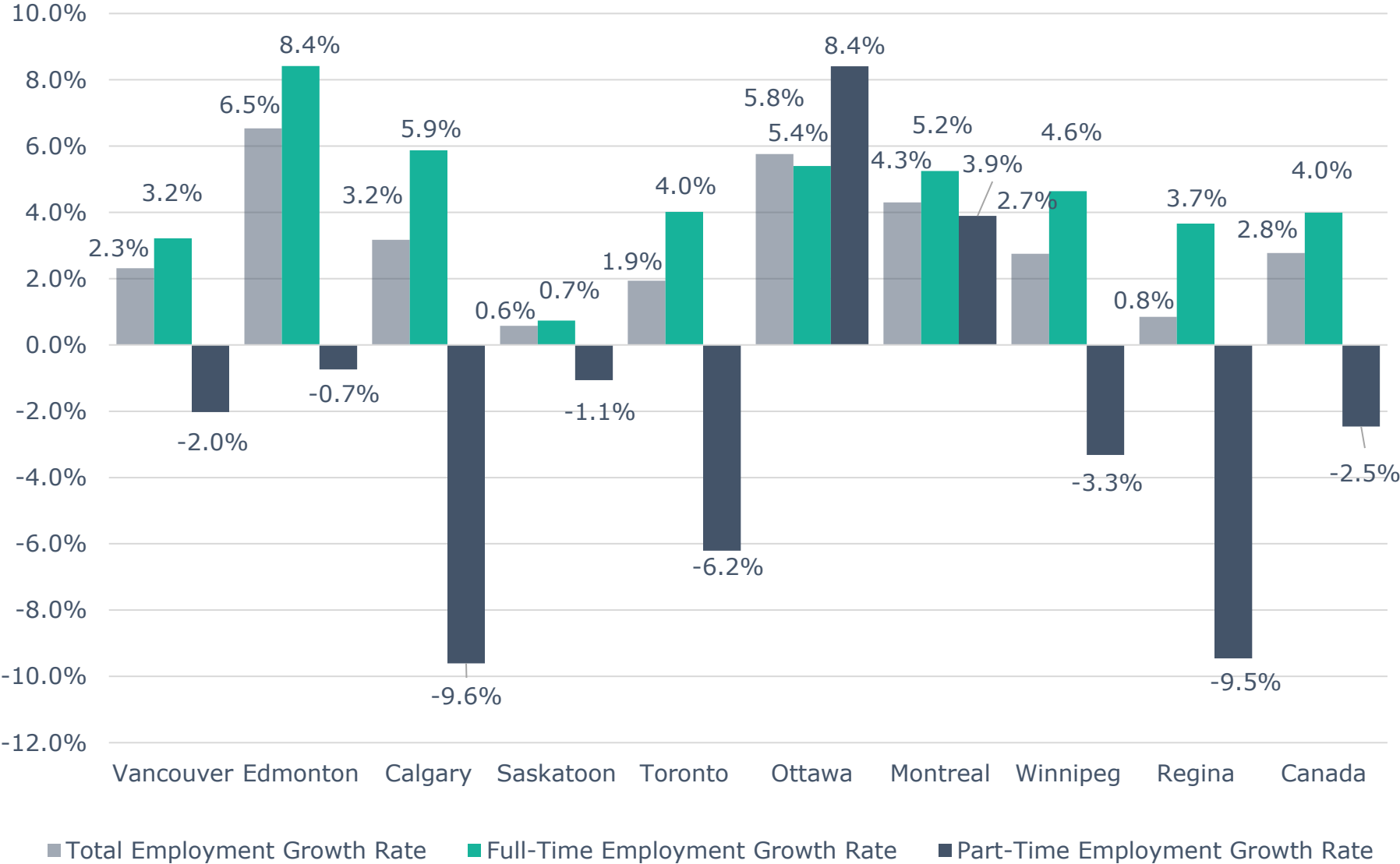
Calgary CMA Monthly Net Jobs Gained or Lost by Industry

(January 2023 - February 2023)



Source: Statistics Canada

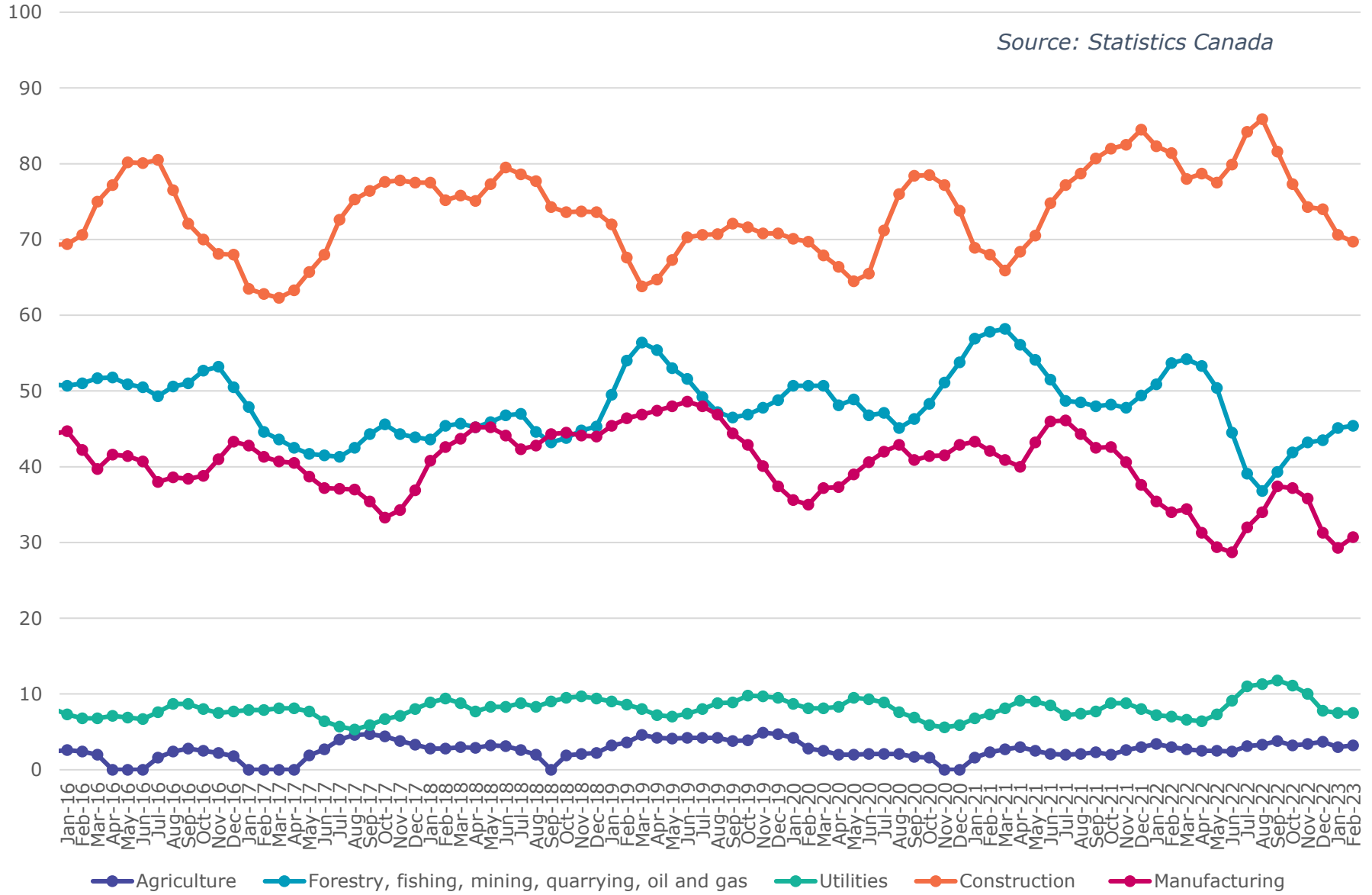
Annual Employment Growth



Source: Statistics Canada, February 2022 - February 2023

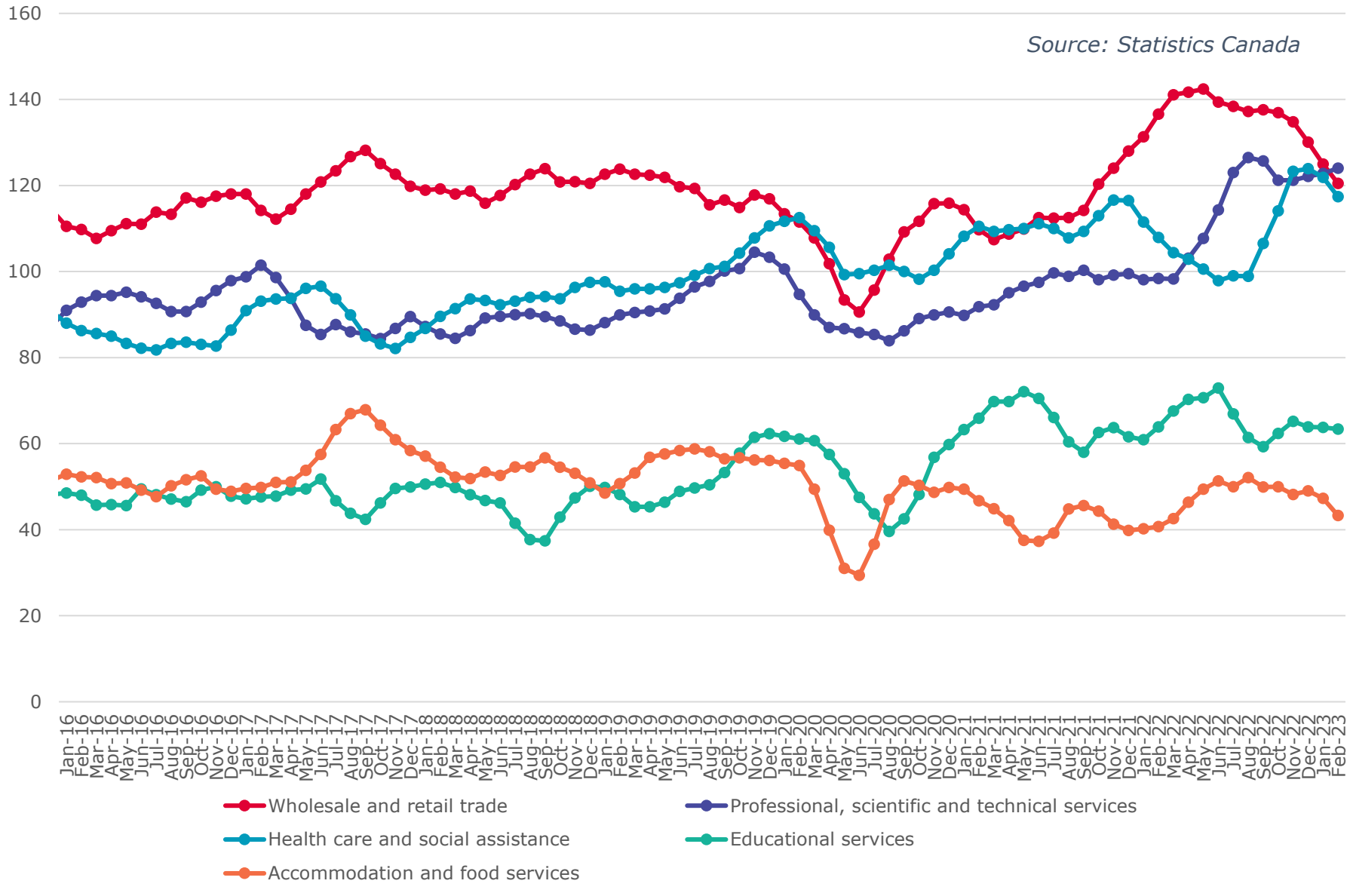
Calgary CMA Goods Producing Sectors - Number of Employees (In thousands)

Source: Statistics Canada



Calgary CMA Largest 5 Services Sector by Number of Employees (In thousands)

Source: Statistics Canada



Calgary CMA Smallest 6 Service Sectors by Number of Employees (In thousands)

Source: Statistics Canada

